

## The Traveling Man – Waiting on a Train

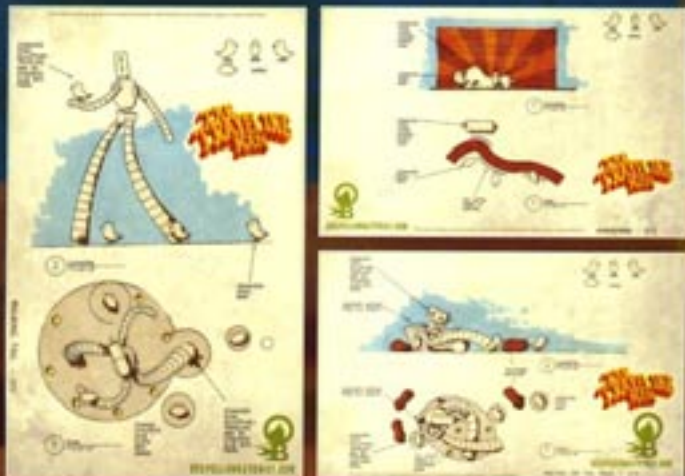
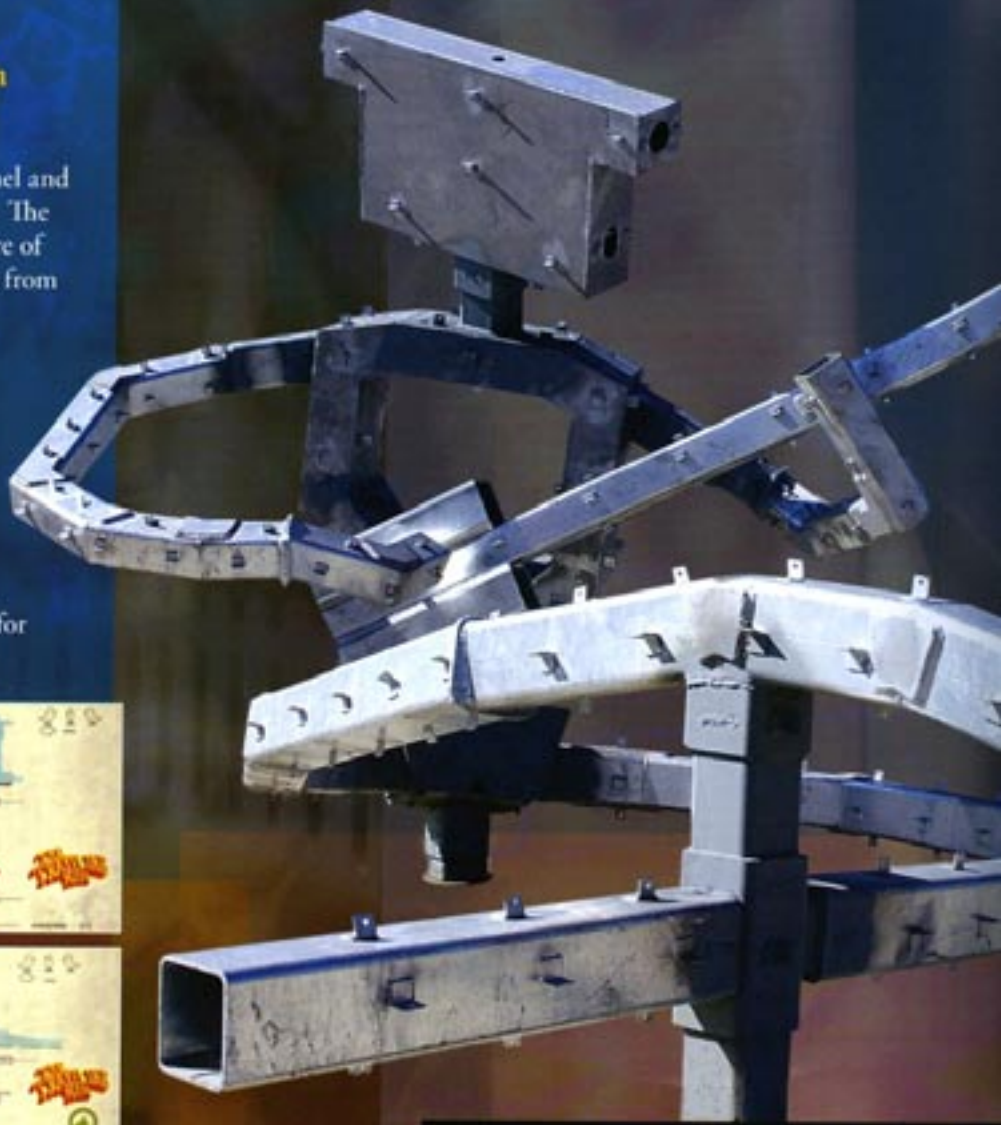
*Good-Latimer & Gaston Avenue*

A nine-foot *Traveling Man* leans against a concrete portion of the original Deep Ellum Tunnel and strums his guitar while waiting for the next train. The circular shape of the guitar body resembles the core of his own body, reminding viewers his music comes from his heart.

## The Traveling Man – Awakening

*Good-Latimer & Elm Street*

The *Traveling Man's* eight-foot-wide head rises from the ground as if he is emerging from the earth below Deep Ellum. As people meet, talk, sing, wait, and spend time in Deep Ellum, they can lounge on his approachable head. Here again, sculptural birds offer their bodies to guests for generous seating.



# Deep Ellum Station

## Linking the Past and the Future

Station artist Julie Cohn strikes a thematic balance between Deep Ellum's legendary past and its hopes for the future. The artwork on the windscreens is a kind of palimpsest – an ancient manuscript that has been written on, scraped off, and used again, creating a layered effect.

"Deep Ellum has had so many iterations," she says. "I really wanted to capture that." The windscreens feature old and new imagery from the neighborhood that shifts depending on the viewing perspective.



Friday,

# Park Cities

neighbors **go** com — Post online, get in print

The Dallas Morning News



## Art of DARTness

Brad Oldham of Highland Park among design honorees **8**

ne  
MA  
Pub  
per

OFF  
Mod  
clos

bu

BO  
Roy  
fooc

CO

HEL  
Doc  
wor

KEE  
Mrs.  
etia

ad

ON  
Fil  
sub

STA  
Coll  
littie